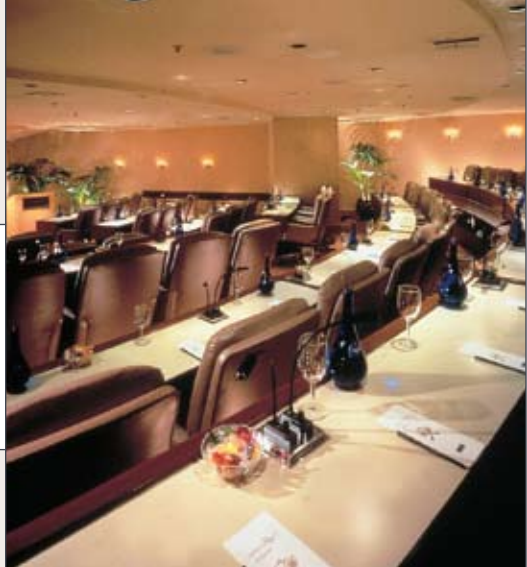


# GRAND HYATT SAN FRANCISCO

**ADDRESS**

**Union Square**  
 345 Stockton St.  
 San Francisco, CA 94108  
 Sleeping Rooms: 685  
 Suites: 30

Phone: 415-398-1234  
 Toll-free: 800-233-1234  
 Guest Fax: 415-391-1780  
 Sales Fax: 415-848-6091  
 Web Address: [www.grandsanfrancisco.hyatt.com](http://www.grandsanfrancisco.hyatt.com)  
 E-mail: [salessfous@hyatt.com](mailto:salessfous@hyatt.com)



**LOCATION**

Located downtown in the heart of the city on the newly remodeled, world-famous Union Square. Surrounded by premier shopping (Saks Fifth Avenue, Armani, Niketown, Macy's, Tiffany's, Macy's West, Williams Sonoma, Disney, Georgiou), restaurants and theaters. Walking distance to Metreon, The Moscone Center, Yerba Buena Gardens, museums, Financial District, Chinatown and cable cars. Twenty minutes/13 miles to SFO, or 30 minutes to Oakland International.

**MEETING/BANQUET FACILITIES**

Nineteen beautifully appointed meeting rooms, some with spectacular views of Union Square and the bay.

Each meeting room has computer-controlled temperature system for heat and air conditioning. 110/220v electricity, music and multiple microphone outlets, 208v/50A available in all meeting rooms and sound control, as well as T1 high-speed Internet access.

7,056-square-foot Plaza Ballroom has capacity for 640 for dinner or 1,000 people for a reception.

The luxurious Conference Theater seats 70 in amphitheater design with executive swivel armchairs and one-touch multimedia control.

**HOTEL AMENITIES**

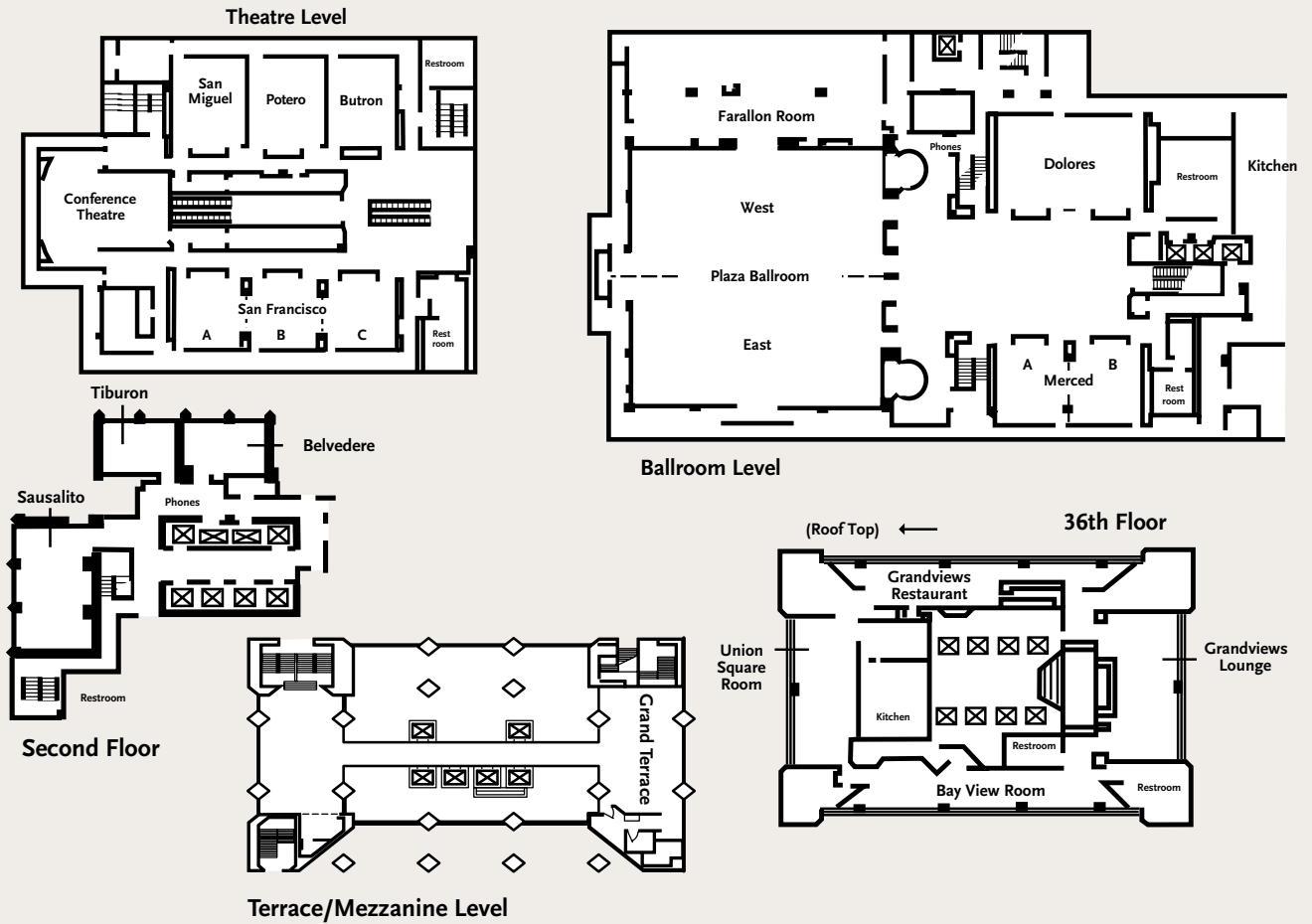
Total number of guest rooms is 685, including 30 suites all featuring the Grand Bed. Premium levels include Grand Club, Business Plan, view rooms and PURE allergy-friendly rooms. Guest rooms are equipped with high-speed Internet access (Wi-Fi and hard wired), two phones (one portable), two lines and speakerphone capability. Spectacular picture window views of the bay, city or coastline.



**GREEN FEATURES**  
 Food composting; energy-efficient lighting; energy consumption monitoring by E-Components; environmentally safe cleaners; recycling initiatives throughout hotel.

ROOM NAME	DIMENSIONS	SQUARE FEET	CEILING HEIGHT	THEATER	SUGGESTED CAPACITIES			
					RECEPTION	BANQUET	CLASSROOM	
<b>BALLROOM LEVEL</b>								
Plaza Ballroom East or West (each)	42' x 84'	3,528	17'	500	400	320	270	
Plaza Ballroom East and West (both)	84' x 84'	7,056	17'	1,000	800/1,000	640	540	
Farallon Room	32' x 81'	2,400	11'	200	250	220	135	
Foyer and Side Rooms	-	-	-	-	400/700	-	-	
Dolores Room	48' x 32'	1,536	10'	180	150	120	100	
Merced A or B (each)	26' x 24'	624	10'	70	60	50	42	
Merced A and B (both)	52' x 24'	1,248	10'	110	120	110	80	
<b>THEATRE LEVEL</b>								
San Francisco A, B or C	26' x 26'	676	9' 5"	70	60	50	42	
San Francisco AB or BC	52' x 26'	1,352	9' 5"	110	130	100	84	
San Francisco A, B and C	78' x 26'	2,028	9' 5"	180	200	150	100	
San Miguel Room	24' x 32'	768	9' 5"	75	70	50	56	
Portrero Room	24' x 32'	768	9' 5"	75	70	50	56	
Butron Room	24' x 32'	768	9' 5"	75	70	50	56	
Conference Theatre	42' x 22' x 24'	1,500	9' 5"	-	-	-	70-100	

# GRAND HYATT SAN FRANCISCO



ROOM NAME	DIMENSIONS	SQUARE FEET	CEILING HEIGHT	SUGGESTED CAPACITIES				
				THEATER	RECEPTION	BANQUET	CLASSROOM	
<b>MEZZANINE LEVEL</b>								
Grand Terrace	47' x 24'	1,128	-	-	125	90	-	
<b>SECOND FLOOR</b>								
Sausalito	24' x 36'	864	8'	80	75	60	58	
Tiburon	24' x 16'	384	8'	-	-	12	-	
Belvedere	24' x 16'	384	8'	30	30	30	24	
<b>36TH FLOOR</b>								
Union Square	21' x 50'	1,050	10'	100	110	100	80	
Bayview	16' x 66'	1,056	9'	100	150	80	80	
Grandviews Lounge	51' x 28'	1,428	9' 8"	-	75	50	-	