



# SAN FRANCISCO MARRIOTT MARQUIS

## ADDRESS

**Yerba Buena**  
 55 Fourth St.  
 San Francisco, CA 94103  
 Sleeping Rooms: 1,500  
 Suites: 137

Sales Phone: 415-442-6029  
 Toll-free: 800-228-9290  
 Guest Fax: 415-486-8101  
 Sales Fax: 415-486-8155  
 Web Address: sfmarriott.com  
 E-mail: salesdept@sfmarriott.com

## LOCATION

Discover a beautiful downtown San Francisco hotel rising 39 stories high into the city skyline at the illustrious San Francisco Marriott Marquis. Just south of Market Street, this San Francisco convention center hotel is situated across the street from The Moscone Center and steps away from the city's top attractions, including the historic cable cars, world-class shopping on Union Square and Westfield San Francisco Shopping Centre featuring Bloomingdale's and Nordstrom. Walk to the Financial District for work, Chinatown for lunch and then to AT&T Park, home of Major League Baseball's San Francisco Giants, for play. Indulge yourself in one of many tasteful restaurants or realize your appreciation of the arts at SFMOMA. San Francisco is served by two major airports: OAK and SFO.

## MEETING/BANQUET FACILITIES

The great indoors at the San Francisco Marriott Marquis offers more than 117,000 square feet of flexible meeting and exhibition space with easy access to loading docks and service elevators.

- The Yerba Buena Ballroom offers 41,588 square feet and can be divided into 15 separate conference areas.
- The Golden Gate Ballroom offers 23,165 square feet and can be divided into nine separate conference areas.
- There are 21 conference suites totaling 14,000 square feet on the fourth and fifth levels of the hotel with private bath, wet bar and pantry. Suitable for groups of five to 150.
- An additional 11 conference suites and foyer totaling 17,000 square feet on the second-level atrium were unveiled in fall 2008 and named the Foothill Meeting Rooms.

## HOTEL AMENITIES

The hotel features a fitness center, indoor pool, concierge desk, business center and four restaurants and lounges, including a licensed Starbucks store.



**GREEN FEATURES**  
 Recycles or donates more than 2,500,000 pounds annually. Captures more than 1 million pounds of food for compost. Recycles more than 400,000 pounds of cardboard, 500,000 newspapers and 750,000 bottles and cans.

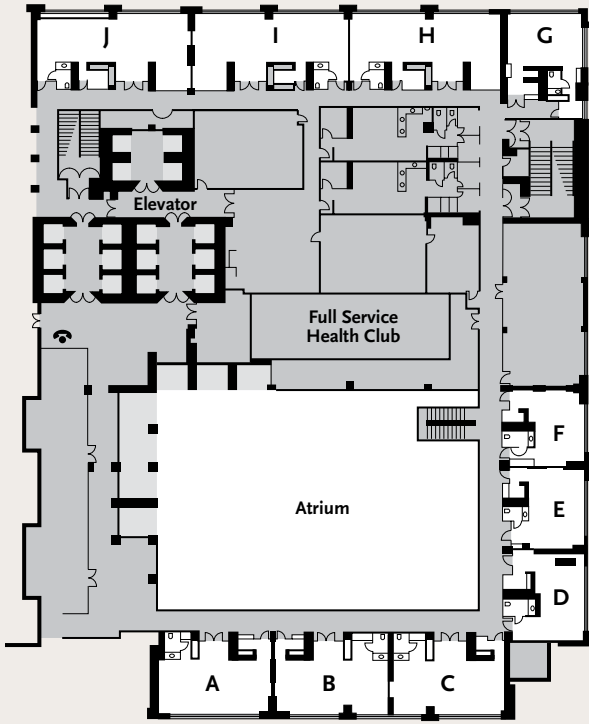
| ROOM NAME      | DIMENSIONS | SQUARE FEET | CEILING HEIGHT | THEATER | SUGGESTED CAPACITIES |         |           |  |
|----------------|------------|-------------|----------------|---------|----------------------|---------|-----------|--|
|                |            |             |                |         | RECEPTION            | BANQUET | CLASSROOM |  |
| Foothill A     | 31' x 22'  | 567         | 15'            | 54      | 62                   | 20      | 18        |  |
| Foothill B     | 37' x 17'  | 592         | 15'            | 45      | 62                   | 30      | 18        |  |
| Foothill D     | 22' x 35'  | 676         | 9'             | 56      | 71                   | 20      | 30        |  |
| Foothill E     | 41' x 28'  | 1,055       | 10'            | 110     | 111                  | 60      | 42        |  |
| Foothill F     | 50' x 28'  | 1,038       | 10'            | 95      | 109                  | 40      | 33        |  |
| Foothill G     | 61' x 32'  | 1,672       | 10'            | 120     | 175                  | 70      | 75        |  |
| Foothill G1    | 35' x 32'  | 949         | 10'            | 75      | 99                   | 30      | 24        |  |
| Foothill G2    | 34' x 32'  | 723         | 10'            | 45      | 76                   | 10      | 12        |  |
| Foothill H     | 23' x 28'  | 517         | 10'            | 26      | 54                   | 20      | 9         |  |
| Foothill I     | 12' x 17'  | 212         | 11'            | 15      | 22                   | 10      | 6         |  |
| Foothill J     | 37' x 17'  | 533         | 8'             | 50      | 56                   | 20      | 20        |  |
| Mission Steak  | 105' x 60' | 6,062       | 10'            | -       | 375                  | -       | -         |  |
| Club Room      | 45' x 56'  | 2,414       | 11'            | 250     | 254                  | 150     | 60        |  |
| Foothill Foyer | 93' x 116' | 2,588       | 9'             | -       | 272                  | -       | -         |  |
| Atrium Foyer   | 75' x 109' | 5,134       | 65'            | -       | 810                  | -       | -         |  |

Note: Exhibit capacities are subject to San Francisco fire marshall approval.

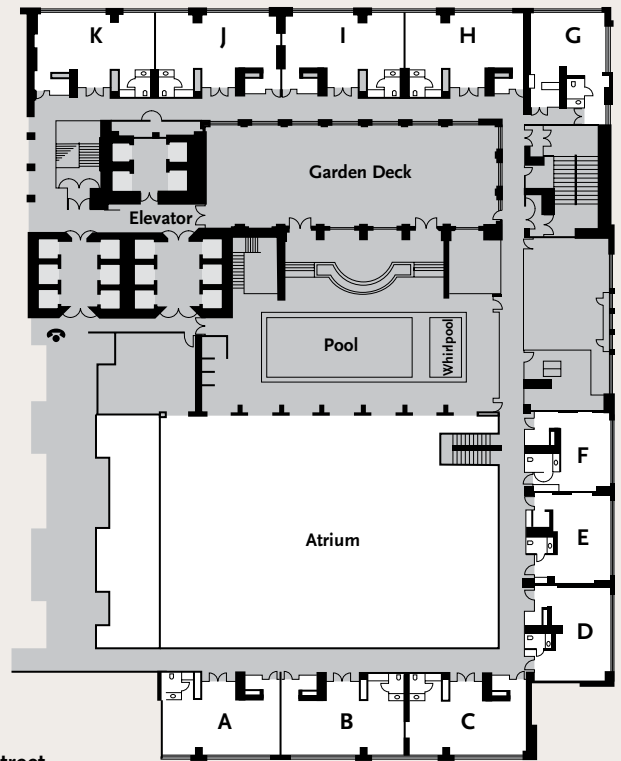
# SAN FRANCISCO MARRIOTT MARQUIS

## Pacific and Sierra Conference Suites and Club Room Fourth, Fifth and Atrium Levels (all conference suites have windows)

**Pacific  
(Fourth Floor)**



**Sierra  
(Fifth Floor)**

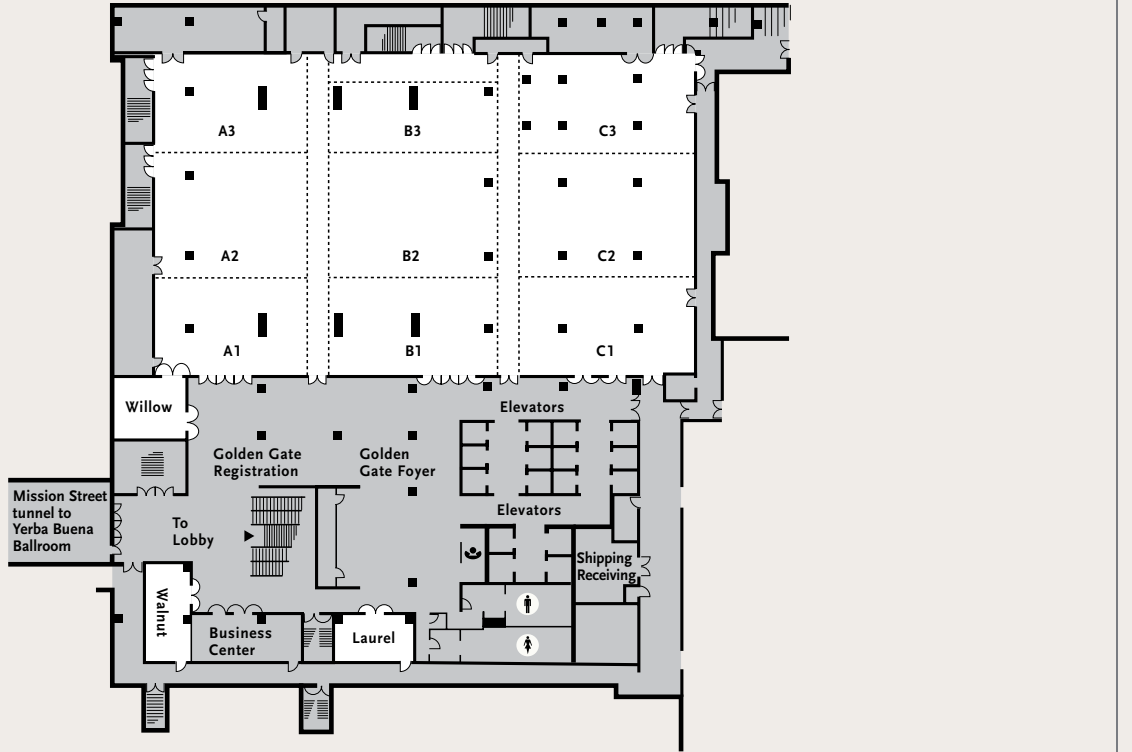


Fourth Street

| ROOM NAME                | DIMENSIONS   | SQUARE FEET | CEILING HEIGHT | SUGGESTED CAPACITIES |           |         |           |  |
|--------------------------|--------------|-------------|----------------|----------------------|-----------|---------|-----------|--|
|                          |              |             |                | THEATER              | RECEPTION | BANQUET | CLASSROOM |  |
| Pacific Suites*, Suite A | 40' x 18' 6" | 740         | 7' 9"          | 60                   | 100       | 40      | 42        |  |
| Suite B or C             | 41' x 18' 6" | 758         | 7' 9"          | 60                   | 105       | 40      | 42        |  |
| Suite D                  | 17' x 31'    | 527         | 7' 9"          | –                    | 20        | 14*     | –         |  |
| Suite E                  | 19' x 29'    | 551         | 7' 9"          | 50                   | 50        | 30      | 28        |  |
| Suite F                  | 17' x 26' 6" | 452         | 7' 9"          | 45                   | 50        | 30      | 25        |  |
| Suite G                  | 27' x 20'    | 540         | 7' 9"          | –                    | 20        | 14*     | –         |  |
| Suite H or J             | 54' x 18'    | 972         | 7' 9"          | 90                   | 135       | 50      | 60        |  |
| Suite I                  | 54' 6" x 18' | 981         | 7' 9"          | 90                   | 140       | 50      | 60        |  |
| Sierra Suites, Suite A   | 40' x 18' 6" | 740         | 7' 9"          | 60                   | 100       | 40      | 42        |  |
| Suite B                  | 41' x 18' 6" | 758         | 7' 9"          | 60                   | 105       | 40      | 42        |  |
| Suite C                  | 42' x 18' 6" | 781         | 7' 9"          | 60                   | 100       | 40      | 42        |  |
| Suite D                  | 17' x 31'    | 527         | 7' 9"          | –                    | 20        | 14*     | –         |  |
| Suite E                  | 19' x 29'    | 551         | 7' 9"          | 50                   | 50        | 30      | 28        |  |
| Suite F                  | 17' x 26' 6" | 452         | 7' 9"          | 45                   | 40        | 30      | 25        |  |
| Suite G                  | 27' x 20'    | 540         | 7' 9"          | –                    | 20        | 14*     | –         |  |
| Suite H or K             | 40' x 18'    | 720         | 7' 9"          | 60                   | 100       | 40      | 42        |  |
| Suite I or J             | 41' x 18'    | 738         | 7' 9"          | 60                   | 105       | 40      | 42        |  |
| Club Room, Atrium Level  | 65' x 37'    | 2,405       | 8' 5"          | 100                  | 250       | 140     | 50        |  |

# SAN FRANCISCO MARRIOTT MARQUIS

## Golden Gate Hall B2 Level

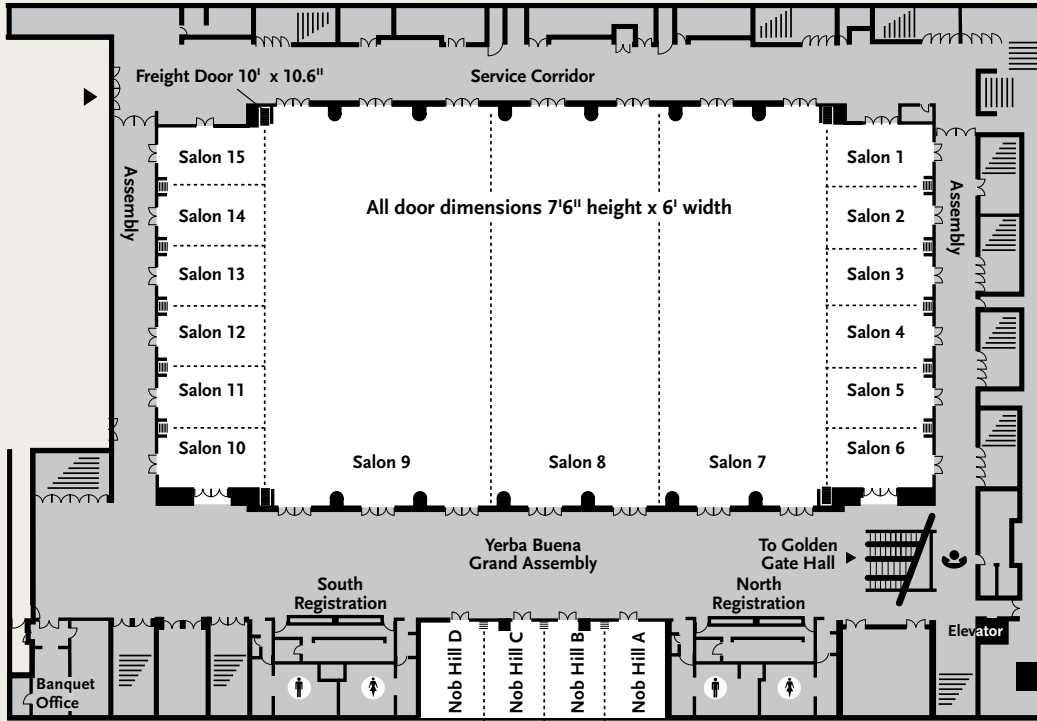


| ROOM NAME         | DIMENSIONS      | SQUARE FEET | CEILING HEIGHT | THEATER | SUGGESTED CAPACITIES |         |           |
|-------------------|-----------------|-------------|----------------|---------|----------------------|---------|-----------|
|                   |                 |             |                |         | RECEPTION            | BANQUET | CLASSROOM |
| Golden Gate Hall  | —               | 23,165      | —              | 1,320   | 2,900                | 1,300   | —         |
| Section A         | 64' 6" x 117'   | 7,546       | 9' 6"          | 450     | 940                  | 450     | 250       |
| Section B         | 60' 6" x 117'   | 7,078       | 9' 6"          | 550     | 880                  | 430     | 300       |
| Section C         | 73' x 117'      | 8,541       | 9' 6"          | 300     | 900                  | 400     | 200       |
| Salon A1          | 55' x 36' 6"    | 2,007       | 9' 6"          | 120     | 250                  | 120     | 80        |
| Salon A2          | 55' x 41'       | 2,255       | 9' 6"          | 190     | 280                  | 140     | 120       |
| Salon A3          | 55' x 39' 6"    | 2,172       | 9' 6"          | 120     | 270                  | 120     | 80        |
| Salon B1          | 60' 6" x 36' 6" | 2,208       | 9' 6"          | 90      | 275                  | 140     | 40        |
| Salon B2          | 60' 6" x 41'    | 2,480       | 9' 6"          | 200     | 310                  | 150     | 130       |
| Salon B3          | 60' 6" x 39' 6" | 2,390       | 9' 6"          | 120     | 300                  | 90      | 90        |
| Salon C1          | 63' 6" x 36' 6" | 2,318       | 9' 6"          | 120     | 300                  | 140     | 80        |
| Salon C2          | 63' 6" x 41'    | 2,603       | 9' 6"          | 160     | 325                  | 140     | 100       |
| Salon C3          | 63' 6" x 39' 6" | 2,508       | 9' 6"          | 100     | 315                  | 110     | 70        |
| Golden Gate Foyer | —               | 7,633       | —              | —       | 950                  | —       | —         |
| Laurel            | 29' x 17'       | 493         | 9'             | 42      | 60                   | 30      | 24        |
| Walnut            | 16' 6" x 35'    | 577         | 9'             | 60      | 70                   | 30      | 40        |
| Willow            | 27' x 23'       | 621         | 9'             | 70      | 75                   | 40      | 40        |

Capacities are based on room set-ups that afford optimal sight lines, due to pillars. \*Irregular ceiling height: 8' 4"-9' 6".

# SAN FRANCISCO MARRIOTT MARQUIS

## Yerba Buena Ballroom Lower B2 Level



DIMENSIONS      SQUARE FEET      CEILING HEIGHT      THEATER      RECEPTION      BANQUET      CLASSROOM

| ROOM NAME                  | DIMENSIONS       | SQUARE FEET | CEILING HEIGHT | SUGGESTED CAPACITIES |           |         |           |
|----------------------------|------------------|-------------|----------------|----------------------|-----------|---------|-----------|
|                            |                  |             |                | THEATER              | RECEPTION | BANQUET | CLASSROOM |
| Yerba Buena Ballroom       | 281' x 148'      | 39,865      | 22'-25'        | 4,300                | 5,500     | 3,000   | 2,360     |
| Salon 1                    | 38' x 21'        | 798         | 18'            | 80                   | 110       | 60      | 45        |
| Salon 2                    | 38' x 22'        | 836         | 18'            | 80                   | 110       | 60      | 45        |
| Salons 3, 4, 5 (each)      | 38' x 22' 6"     | 855         | 18'            | 80                   | 110       | 60      | 45        |
| Salon 6                    | 38' x 22'        | 836         | 18'            | 80                   | 110       | 60      | 45        |
| Salon 1-6 (combined)       | 38' x 132'       | 5,035       | 18'            | 480                  | 720       | 360     | 290       |
| Salon 7                    | 59' 6" x 147'    | 8,776       | 24' 6**        | 890                  | 1,150     | 650     | 540       |
| Salon 8                    | 60' x 147' 6"    | 8,850       | 24' 6**        | 890                  | 1,175     | 650     | 540       |
| Salon 9                    | 82' 6" x 147' 6" | 12,169      | 24' 6**        | 1,150                | 1,600     | 900     | 700       |
| Salon 10                   | 38' x 22'        | 836         | 18'            | 80                   | 110       | 60      | 45        |
| Salon 11, 12, 13, (each)   | 38' x 22' 6"     | 855         | 18'            | 80                   | 110       | 60      | 45        |
| Salon 14                   | 38' x 22'        | 836         | 18'            | 80                   | 110       | 60      | 45        |
| Salon 15                   | 38' x 22' 6"     | 798         | 18'            | 80                   | 110       | 60      | 45        |
| Salons 10-15 (combined)    | 38' x 132'       | 5,035       | 18'            | 480                  | 720       | 360     | 290       |
| Nob Hill A, B, C, D (each) | 22' x 32'        | 704         | 13'            | 80                   | 90        | 60      | 45        |
| Nob Hill A-D (combined)    | 88' x 22'        | 2,816       | 13'            | 320                  | 360       | 240     | 140       |
| Grand Assembly             | -                | 12,543      | -              | -                    | 1,650     | -       | -         |

\*Irregular ceiling height: 21' 6"-24' 6".